

# FURNISHING essentials



Your exhibit space should reflect your company's distinctive look and feel, which is why the furniture you choose to fill it is so important. Freeman Furnishing Essentials has everything you need, with an assortment of superior, professional pieces in eye-catching shapes and styles to suit any budget or design essential. In addition, the quality control standards and in-house maintenance that Freeman adheres to are outstanding, so you always know you're getting the best furniture possible to make your show experience a total success.

Browse through this brochure, and if you don't find what you want, don't worry. We will work with you every step of the way to make sure you get exactly what you're looking for. Our prices are all-inclusive and cover shipping and material handling, with no hidden fees. Also, Freeman has multiple warehouse locations across the country, so delivering your furniture solution is always quick and simple.

# seating

When it comes to basic seating needs, look no further than Freeman. Our wide array of well-designed modern chairs, armchairs and stools will serve your show space requirements.

## **diva series**

Natural blonde wood and matte chrome finish highlight this sleek Italian design.

### **diva counter stool**

17"W 16"L 36"H – N71092  
The intermediate 25" seating height makes this stool ideal for theater or demo areas.

### **diva chair**

18"W 16"L 31"H – N71091  
A natural complement to modern exhibit designs.



### **santana armchair**

24"W 20"L 31"H – N710102  
Modern styling with ergonomic shape; as striking as it is comfortable.

**forestdale chair**

21"W 21"L 31"H – N71085  
Padded seat and back in distinct geometric fabric with a sturdy lightweight frame.



**director stool**

17"W 24"L 45"H – N710142

**director chair**

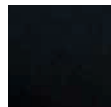
17"W 24"L 32"H – N71042

**custom imprinting**

Ask us about custom logo imprinting on the Director Chair or Stool back fabric. – N710998



Royal Blue



Black



Bright Green



Yellow



Orange



Red



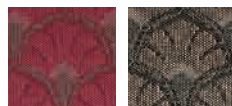
Purple



Bright Blue

**cherry barrel chair**

*Cranberry or Taupe*  
23"W 22"L 29"H – N71038  
Traditional style in a cherry finish with classic fabric pattern options.



**diplomat chair**

*Black Diamond Fabric*  
25"W 28"L 36"H – N710144  
Comfortable, yet compact for office or conference table seating.



**gray gaslift stool**

24"W 20"L 46"H  
With Arms – N71048  
No Arms – N71047

**gray gaslift chair**

26"W 20"L 38"H  
With Arms – N71046  
No Arms – N71045

Telescoping height  
adjustment; five-caster  
base rolls with ease.



**executive chair**

*Black Tweed*  
28"W 25"L 45"H – N71044

**bugle base chair**

*Black or Blue Tweed*  
21"W 20"L 32"H – N71041



Bugle Base Table (page 8)



**black diamond side chair**

21"W 23"L 32"H – N71089

**black diamond stool**

22"W 18"L 46"H – N71088

**black diamond armchair**

20"W 21"L 33"H – N71090



Soho Bistro Table (page 8)

**limerick® chair**

By Herman Miller

Gray

18"W 18"L 33"H – C210108



**casey padded stool**

Black or Gray Fabric

20"W 21.5"L 42.5"H – C210112





# lounge seating

Give your exhibit a casual yet practical look with Freeman superior lounge seating. Pick from a large selection of sofas, loveseats, chairs and barstools that are sure to take your exhibit design to the next level.



**signature loveseat**

*Black*

33"W 60"L 33"H – N73091

Deeply comfortable sofa-style seating in a sleek, contemporary shape.

**signature chair**

*Black*

33"W 35"L 33"H – N71093



**kennedy sectional series**

*Blue or Black Tweed*

Flexible sofa-style seating in a variety of configurations.

**sofa, three-piece**

31"W 87"L 28"H – N730313

**loveseat, two-piece**

31"W 62"L 28"H – N730213

**corner section**

31"W 31"L 28"H – N73013

**center section**

31"W 25"L 28"H – N73014





**glass conference table**

*Black or Chrome Pedestal*

42"W 42"L 30"H – N72015

Rounded square glass top is supported by stylish metal frame in a choice of two colors.



**cherry cocktail table**

19"W 36"L 17"H – N72026

**cherry end table**

20"W 20"L 20"H – N72027

# tables

What Freeman always brings to the table is professionalism, and nothing says more about your meeting space and/or show site than your surfaces and tabletops. Choose from modern glass conference tables, traditional cocktail, end tables and much more.



### metro series

Black

#### slate end table

20"W 20"L 17"H – N72029

#### slate cocktail table

20"W 40"L 15"H – N72028



### pedestal tables

A range of tabletop sizes and materials with pedestals in various heights to fit any space.

### soho series

Black-Top Mini	18"H x 18"W	N72066
Black-Top Cafe	30"H x 24"W	N72069
Black-Top Bistro	42"H x 24"W	N72070
Black-Top Cafe	30"H x 36"W	N72067
Black-Top Bistro	42"H x 36"W	N72068

### chelsea series

Butcher Block-Top Cafe	30"H x 30"W	N72063
	30"H x 36"W	N72064
Butcher Block-Top Bistro	42"H x 30"W	N720163
	42"H x 36"W	N720164



### studio series

#### black end table

17"W 17"L 18"H – C115104

#### black cocktail table

36"W 20"L 15"H – C115103

#### bugle base table

White

36"W 27"H – N72065



# office furniture

When it's time to set up office, Freeman offers a wide selection of superior, professional pieces in eye-catching shapes and styles to suit any budget and/or design essential. From classic credenzas and bookcases to professional seating, we've got all your office furniture requirements.



## **milano table**

42"W 84"L 29"H

*Blonde Top with Black Base – N72093*

*Black Top with Black Base – N72092*

The latest seven-foot conference table by Freeman features clean curved lines and a wealth of work space.



## **luna table**

36"W 72"L 29"H

*Black Top with Black Base – N72094*

This contemporary six-foot conference table or writing desk comes with a black laminate top.



Cherry Tables (page 7)  
Cherry Barrel Chairs (page 2)  
Black Table Lamp (page 14)



**hemingway writing table**

*Black*

24"W 49"L 29"H – N720191

**office series**

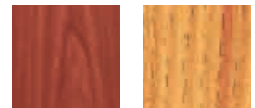
*Cherry or Oak*

**five-foot desk**

30"W 60"L 30"H

*Cherry – N74061*

*Oak – N74071*



**credenza**

16"W 60"L 30"H

*Cherry – N74064*

*Oak – N74074*

**bookcase**

12"W 36"L 72"H

*Cherry – N74065*

*Oak – N74075*



# display



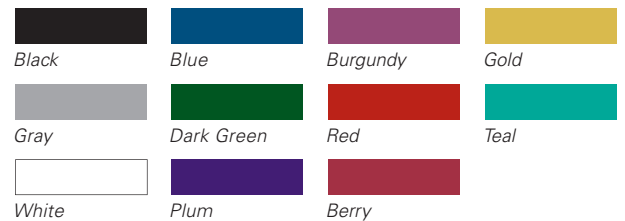
Some of the most essential elements of your exhibit are the surfaces on which you display your show materials. That's why we have an appealing variety of displays, from standing cylinders to sleek computer desks to draped tables and counters, to ensure your show space will be both attractive and interactive.



## draped or undraped tables & counters

Colored draping includes white vinyl top and pleated skirt on three sides. Fourth-side draping is available. Undraped tables include white vinyl tops.

	3'	4'	6'	8'
<b>tables</b> (30" height)				
Draped	C130330	C130430	C130630	C130830
Draped on fourth side			C12404630	C12404830
Undraped	C131330	C131430	C131630	C131830
<b>counters</b> (42" height)				
Draped	C130342	C130442	C130642	C130842
Draped on fourth side			C12404642	C12404842
Undraped	C131342	C131442	C131642	C131842



Tabletop risers are also available in a variety of sizes. See order form for details.



**display cubes**

Black

**12" small**

12"W 12"L 42"H – N75030

**18" medium**

18"W 18"L 36"H – N75031

**24" large**

24"W 24"L 42"H – N75032



**display cylinders**

Black

**low**

30"W 15"H – N75020

**medium**

18"W 20"H – N75021

**high**

24"W 36"H – N75022

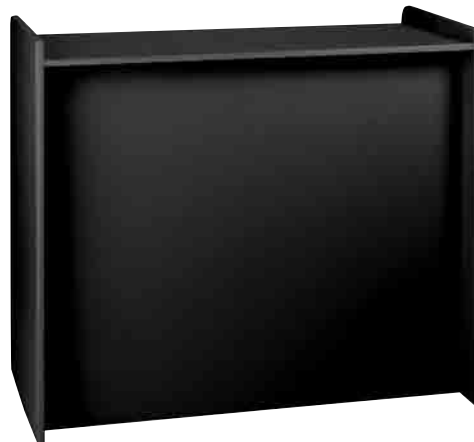


**orion computer kiosk**

Black

28"L 28"D 40.5"H – N75079

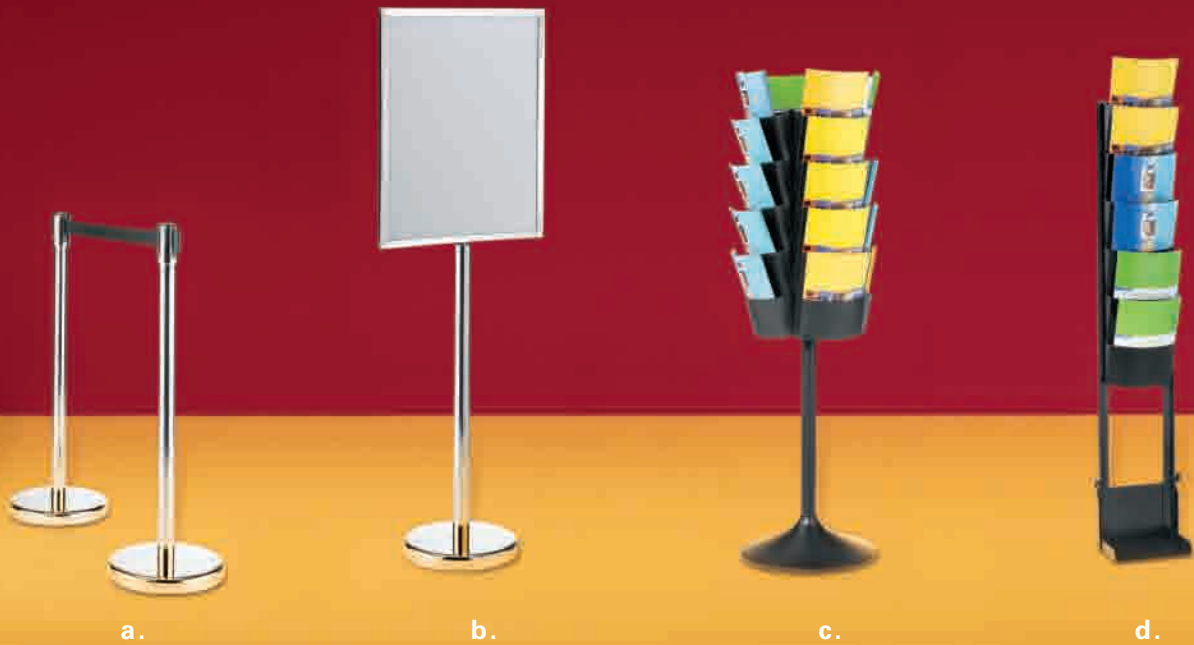
Pedestal for computer demo with keyboard tray and interior storage. (Computer not included.)



**display counter**

Black

24"W 49"L 42"H – N72056



# accessories

We know that every exhibit is different and requires certain pieces that may be hard to find. That's why we offer an assortment of accessories that will meet your needs, from literature racks to bulletin boards to refrigerators and file cabinets. No matter the requirement, your exhibit will always stand out with these striking and functional pieces.

**a. chrome stanchion with 8' retractable belt**

42"H – C220121

**b. chrome sign holder**

Holds 22"x 28" sign – C220118

**c. round literature rack**

17"W 17"L 57"H – N750135

Revolving black display holds printed materials for easy access from 20 pockets.

**d. flat literature rack**

10"W 55"H – N750136

Forward-facing black display presents printed materials in six pockets.

**e. chrome coat tree**

C220109

**f. chrome easel**

C220134

**g. chrome bag rack**

C220110

**h. contempo trash receptacle**

8"W 24"H

*Black* – N75053

*Aluminum* – N75054

**wastebasket**

Wastebasket color may vary.

C220107

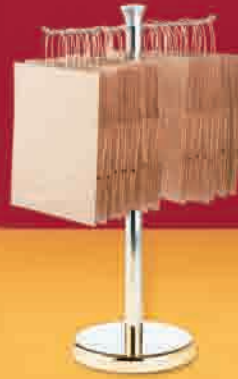




e.



f.



g.



h.

**small refrigerator\***

19"W 19"L 34"H – N75057



**file cabinet with lock**

Standard Size

**two-drawer**

15"W 29"L 28"H – N74082

**four-drawer**

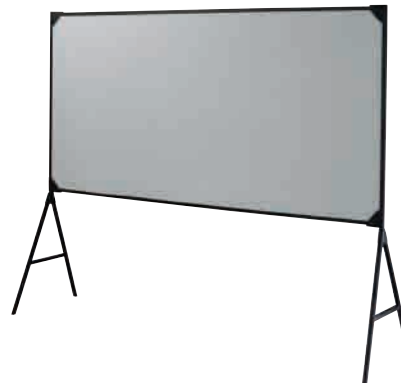
15"W 29"L 50"H – N74081



**table lamp\***

Black

25"H – N75052



**floor-standing  
bulletin board**

48"W 96"L 78"H – C10201484

\*Note: Electrical power must be ordered separately.  
For ideas on furniture pairings, go to [www.freemanco.com/furniturepairing](http://www.freemanco.com/furniturepairing)